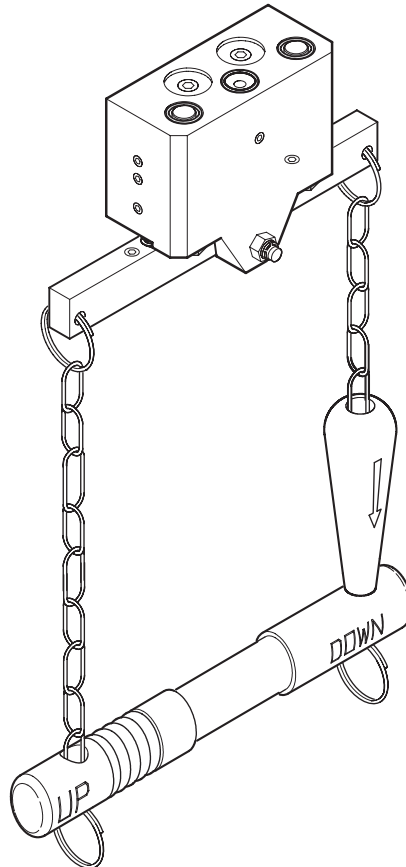


PARTS AND MAINTENANCE MANUAL for AIR HOIST ROPE CONTROL



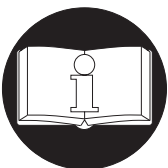
(Dwg. MHP2538)

Rope Control is suitable for mounting on the following Air Hoist Models:

Liftchain LCA Series 1.5 to 25 tons (non CE models only)

Palair Plus Series 0.25 to 2 ton (non CE models only)

Hoist pendant controls for the above models can be replaced with a Rope Control without dismounting the hoist.



This manual contains parts ordering information. Make this manual available to all persons responsible for the maintenance of these products.

Form SAM0148

Edition 6

71420590

May 2003

© 2003 Ingersoll-Rand Company



MAINTENANCE

Refer to Dwg. MHP1986 on page 2, for disassembly, assembly and adjustment instructions.

Rope Control Disassembly

1. Remove capscrews (15) and seal washers (19). Separate motor cover (14) from hoist.
2. Remove 'O' rings (17) and discard if worn.
3. Remove nut (12) and capscrew (11).
4. Remove lever (16) and springs (20). If required remove pull chain (22) and throttle handles (23) from lever.
5. Remove screws (8).
6. Remove valves (1).
7. Remove protector (2) and 'O' rings (3 and 4) from each valve, and discard 'O' rings if worn.
8. Remove plugs (7).
9. Remove springs (6) and balls (5).
10. Remove setscrews (13).

Rope Control Assembly

Assembly of the pendant control is the same as disassembly, do procedures in opposite order. Replace 'O' rings as necessary when re-assembling rope control.

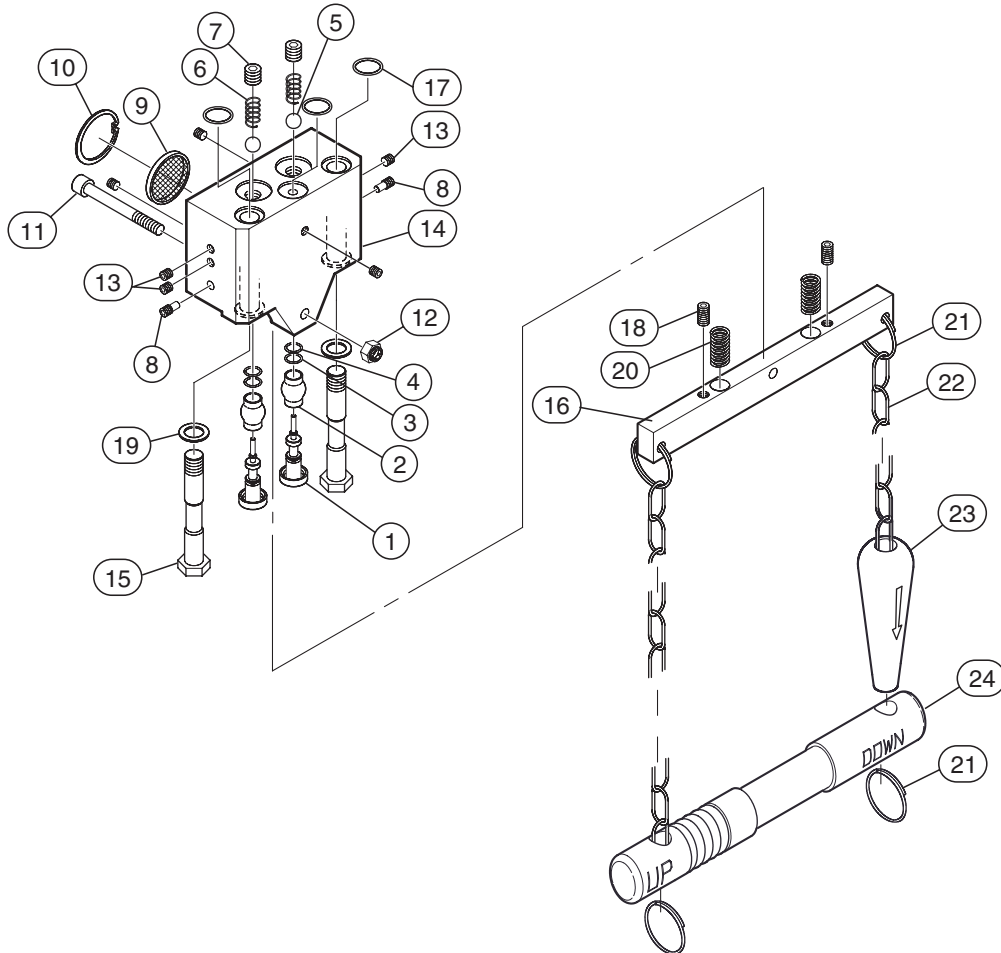
NOTICE

• Lubricate valves (1) before installing. Apply a small amount of Loctite® 243 on threads of screws (8) and Loctite® 577 on threads of plugs (7).

Adjustments

1. Adjust setscrews (18) in lever (16) to limit travel.

ROPE CONTROL ASSEMBLY DRAWING



(Dwg. MHP1986)

Reference engineering drawing D5790032.

ROPE CONTROL ASSEMBLY PARTS LIST

Item No.	Description of Part	Qty Total	Part Number
40	Rope Control Assembly (includes items 1 through 20)		75790102
1	Valve	2	95790104
2	Protector	2	95790107
• 3	'O' Ring	2	58209229
• 4	'O' Ring	2	58235329
• 5	Ball	2	69401625
6	Spring	2	69128541
7	Plug	2	65107741
8	Screw	2	42008307
9	Exhaust Washer	1	67600303
10	Retainer Ring	1	47713030
11	Capscrew	1	41321706
12	Nut	1	43707611
14	Motor Cover	1	95790138
15	Capscrew	2	95790139
16	Lever	1	95790140
• 17	'O' Ring	3	58210729
18	Setscrew	2	42008607
• 19	Seal Washer	2	58409731
20	Spring	2	69135141
21	Ring	4	90530031
22	Pull Chain (bulk)	As Req'd	69033232
23	Throttle Handle *	1 (2)	33268
24	Handle	1	44806

* Item 23, Throttle Handle may use qty of 2, as an option, replacing qty of 1 item 24, Handle.

• Recommended Spare

PARTS ORDERING INFORMATION

Return Goods Policy

Ingersoll-Rand will not accept returned goods for warranty or service unless prior arrangements have been provided from the location the goods were purchased.

Disposal

When the life of the product has expired, it is recommended that the product be disassembled, degreased and parts separated as to materials so that they may be recycled

For additional information contact:

Ingersoll-Rand

Douai Operations

111, avenue Roger Salengro

59450 Sin le Noble France

Phone: (33) 3-27-93-08-08

Fax: (33) 3-27-93-08-00

United States Office Locations

I-R For Technical Support and Order Entry Status

**Ingersoll-Rand
Global Logistics**
P.O. Box 618
510 Hester Drive
White House, TN 37188
Phone: (615) 474-8665
Fax: (615) 672-0854

Web Site:
www.irco.com

Regional Sales Offices

Annandale, NJ
P.O. Box 970
1467 Route 31 South
Annandale, NJ 08801
Phone: (908) 238-7000
Fax: (908) 238-7048

Detroit, MI
1872 Enterprise Drive
Rochester Hills, MI 48309
Phone: (248) 293-5700
Fax: (248) 293-5800

International Office Locations

Offices and distributors in principal cities throughout the world. Contact the nearest **Ingersoll-Rand** office for the name and address of the distributor in your country or write/fax to:

Canada
National Sales Office
Regional Warehouse
Toronto, Ontario
51 Worcester Road
Rexdale, Ontario
M9W 4K2
Phone: (416) 213-4500
Fax: (416) 213-4510
Order Desk
Fax: (416) 213-4506

Latin America Operations
Ingersoll-Rand
730 N.W. 107 Avenue, Suite
300
Miami, FL 33172-3107 USA
Phone: (305) 559-0500
Fax: (305) 559-7505

Europe, Middle East and Africa

Ingersoll-Rand
Douai Operations
111, avenue Roger Salengro
59450 Sin Le Noble, France
Phone: (33) 3-27-93-08-08
Fax: (33) 3-27-93-08-00

Asia Pacific Operations
**Ingersoll-Rand Asia Pacific
Inc.**
42 Benoi Road
Jurong, Singapore
629903
Phone: 65-861-155
Fax: 65-862-1373

Russia
Ingersoll-Rand Co.
Presnensky Val, 19
Moscow Russia 123557
Phone: 095-933-03-24
Fax: 095-737-01-48

Australia
Ingersoll-Rand Ltd.
Landmark Corporate Center
Level 2
454-472 Nepean Highway
Frankston, Vic 3199
Phone: 61-3-8781-1600
Fax: 61-3-8781-1611